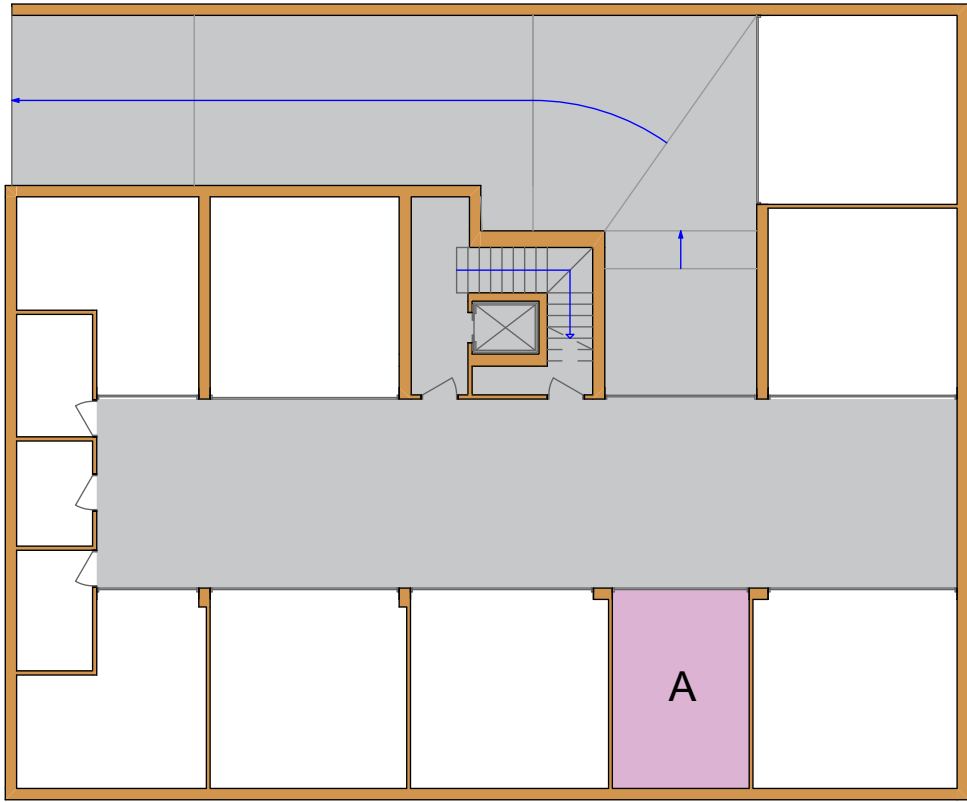


EDIFICIO RESIDENZIALE
VIA ZARA - VALDAGNO

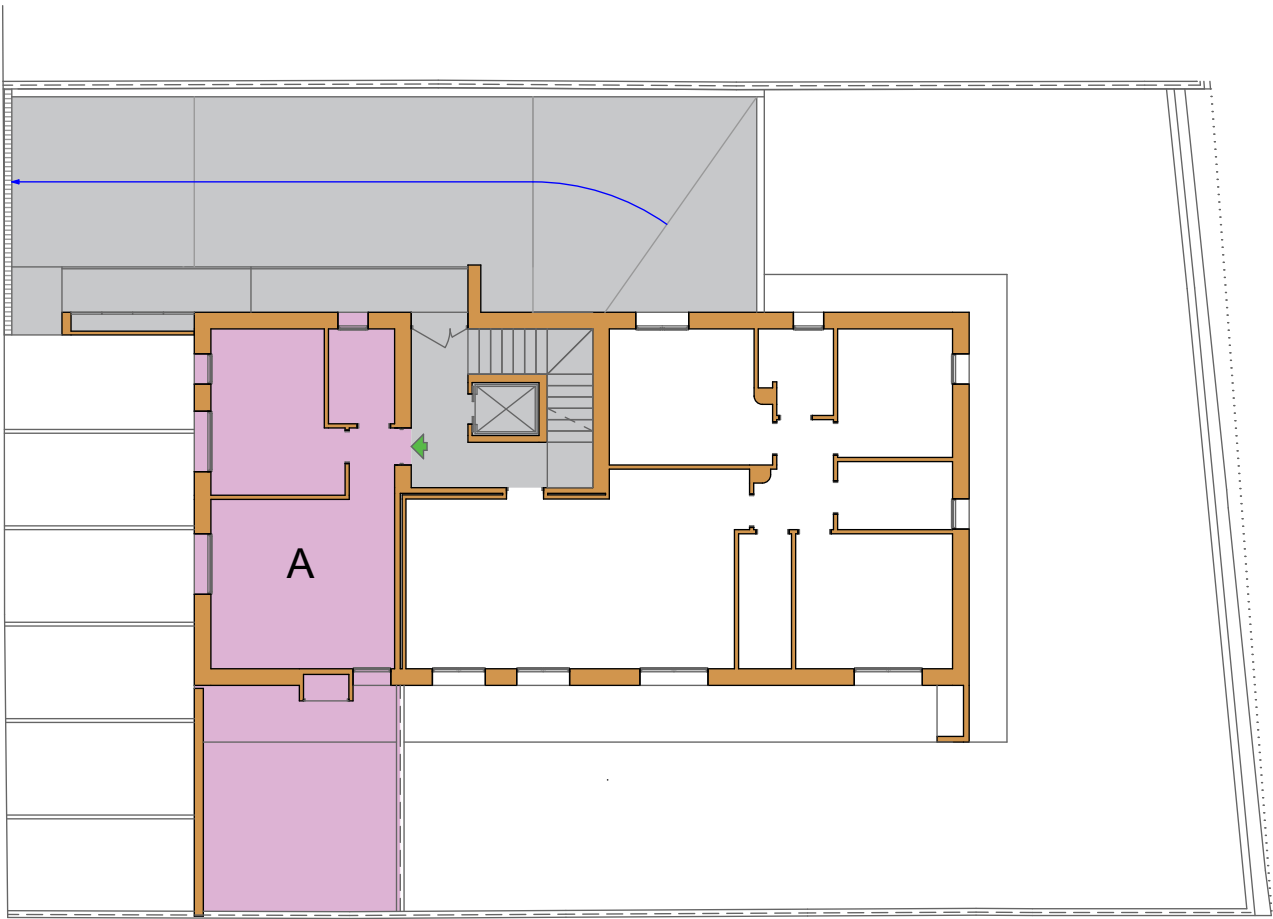
A UNITA' IMMOBILIARE
PIANO TERRA

sc. 1:100

Ottobre 2025

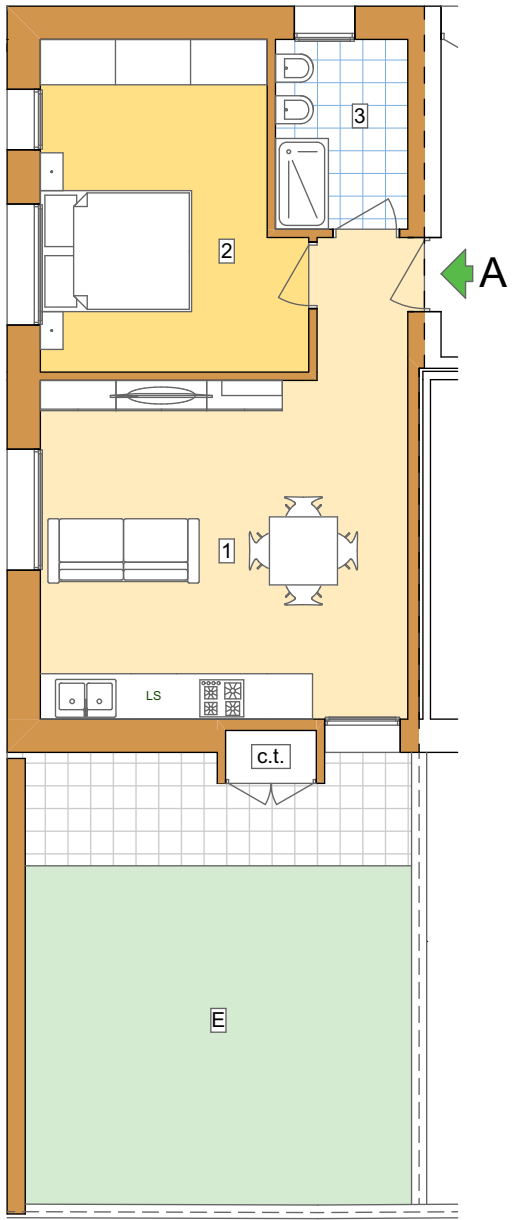


PIANTA PIANO INTERRATO sc. 1:200



PIANTA PIANO TERRA sc. 1:200

- PARTI COMUNI
- UNITA' IMMOBILIARE A



PIANO TERRA Unità A		
1 Zona giorno	mq	24,35
2 Camera	mq	14,18
4 Bagno	mq	4,39
Sup. Utile Abitazione		
	mq	42.61
Sup. Utile Giardino		
	mq	30.00
Sup. Utile Autorimessa		
	mq	18.80
Sup. Commerciale		
	mq	77.98