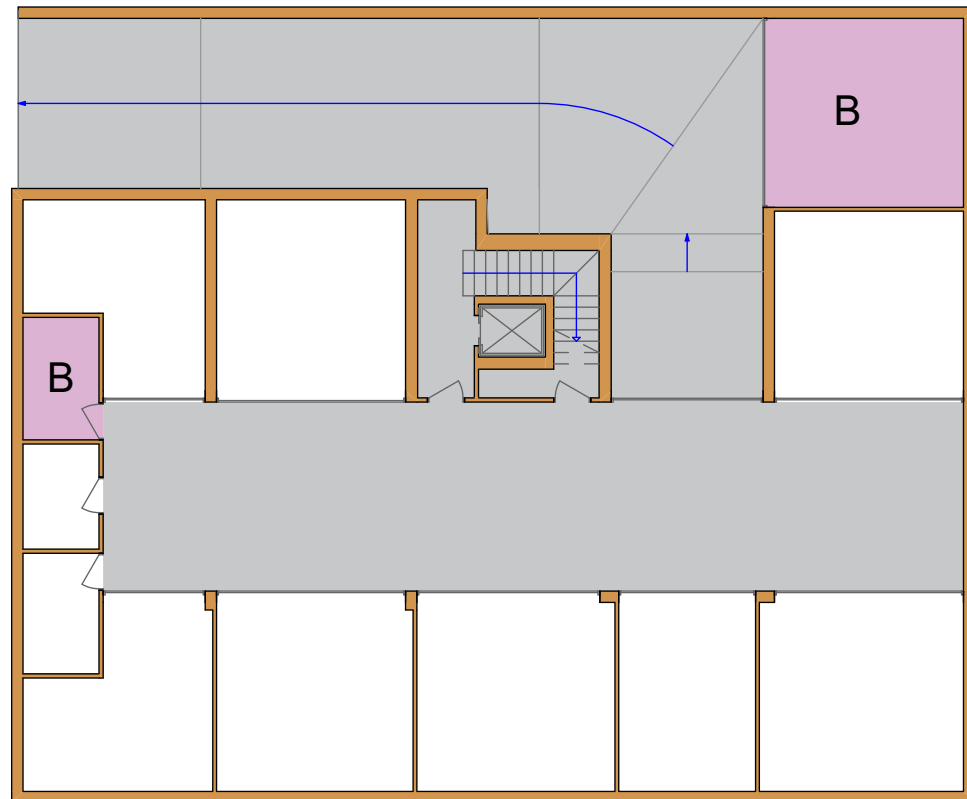


EDIFICIO RESIDENZIALE  
VIA ZARA - VALDAGNO

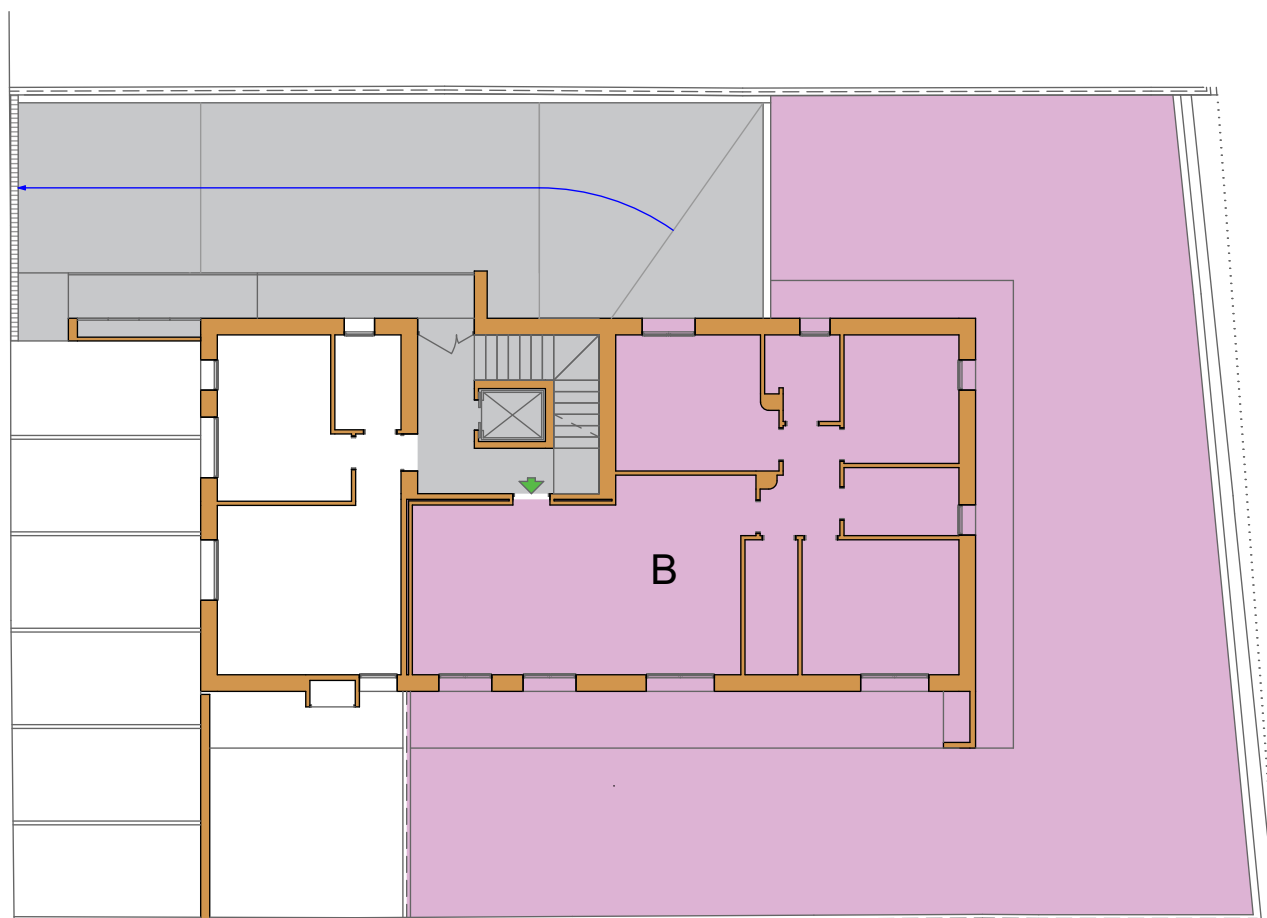
**B** UNITA' IMMOBILIARE  
PIANO TERRA

sc. 1:100

Ottobre 2025

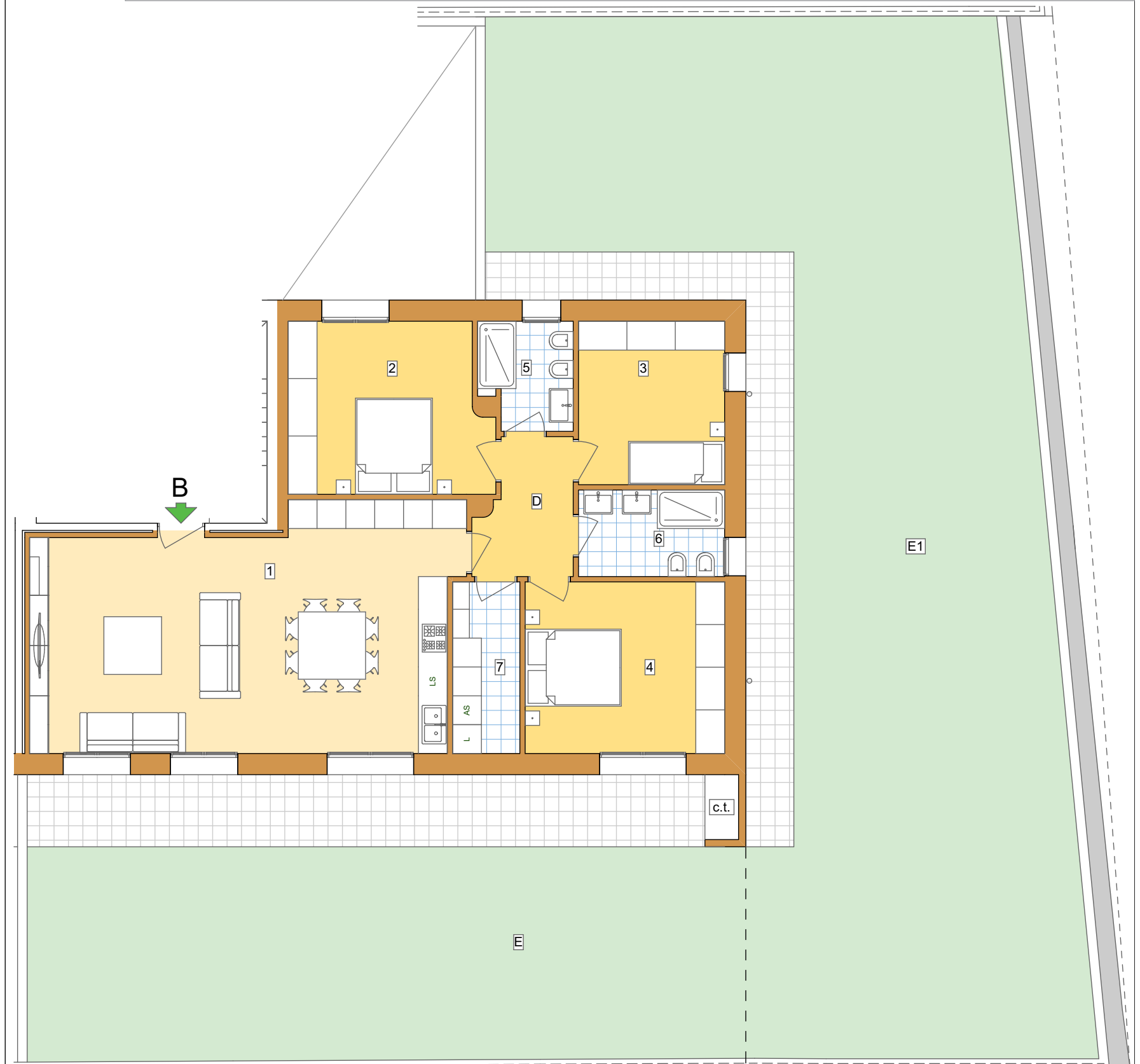


PIANTA PIANO INTERRATO sc. 1:200



PIANTA PIANO TERRA sc. 1:200

- PARTI COMUNI
- UNITA' IMMOBILIARE B



**PIANO TERRA Unità B**

1	Zona giorno	mq	42,27
2	Camera	mq	14,58
3	Camera	mq	10,34
4	Camera	mq	14,82
5	Bagno	mq	4,18
6	Bagno	mq	5,47
7	Lavanderia	mq	5,00
D	Disimpegno	mq	5,19

Sup. Utile Abitazione	mq	102,35
Sup. Utile Giardino	mq	255,65
Sup. Utile Autorimessa	mq	26,00
Sup. Utile Cantina	mq	6,61

Sup. Commerciale	mq	181,44
------------------	----	--------